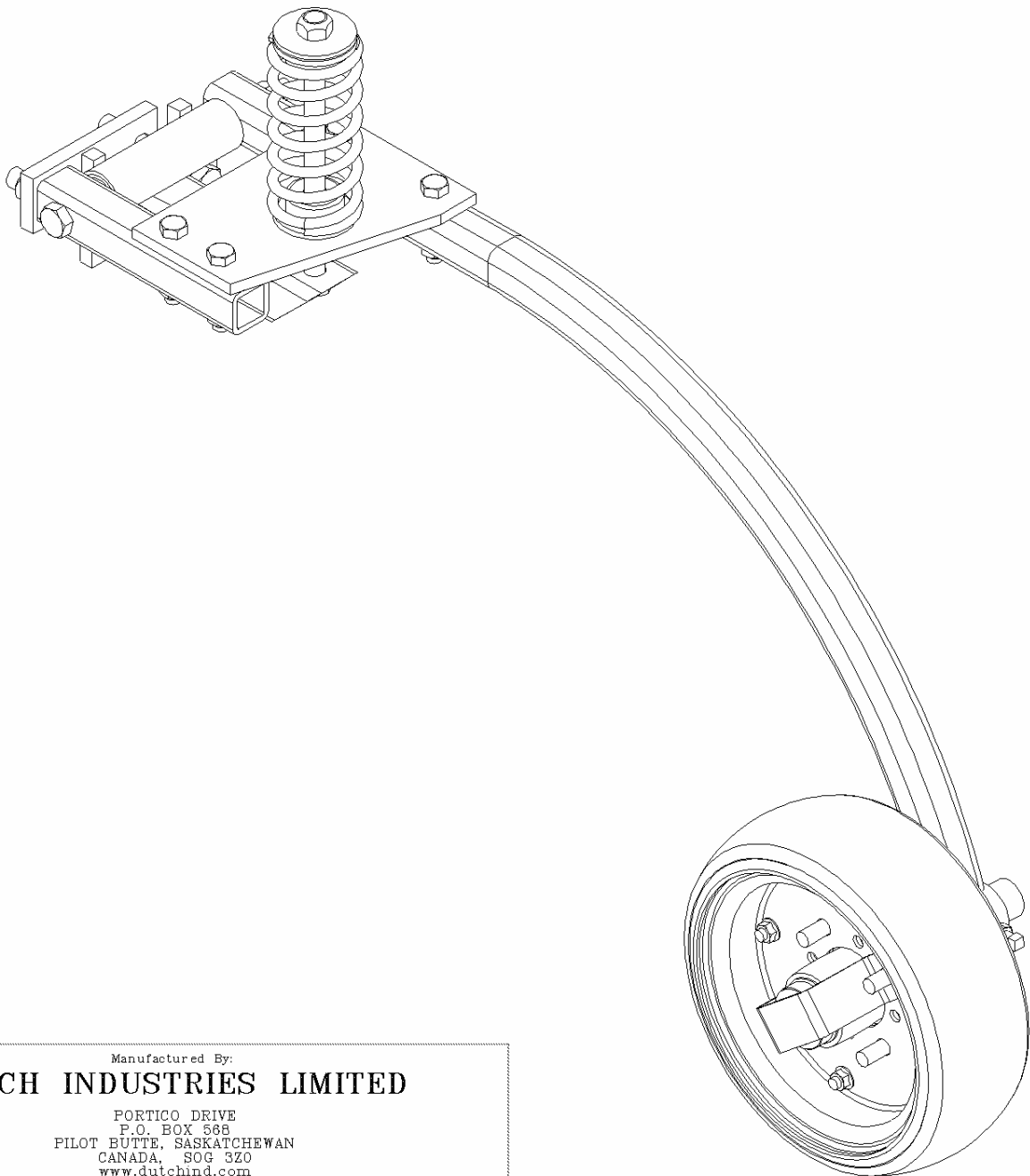


OWNER'S MANUAL FOR

INDEPENDENT ANGLED COULTER HEAVY DUTY PACKER WHEEL



Manufactured By:
DUTCH INDUSTRIES LIMITED

PORTICO DRIVE
P.O. BOX 568
PILOT BUTTE, SASKATCHEWAN
CANADA, S0G 3Z0
www.dutchind.com

Phone: (306) 781-4820
Fax: (306) 781-4877
Toll Free: 1-800-663-8824

Part #6736

JANUARY 31, 2002

TABLE OF CONTENTS

Introduction	Page 1
General Safety	Page 1
Safety Instructions.....	Page 2
Getting Started	Page 2
Initial Set Up	Page 2
Installation Instructions.....	Page 3
6700 Parts List – Right.....	Page 4
6700 Assembly Drawing – Right	Page 5
6734 Parts List – Offset Right	Page 6
6734 Assembly Drawing – Offset Right.....	Page 7
6735 Parts List – Left	Page 8
6735 Assembly Drawing - Left	Page 9
6733 Parts List – Offset Left.....	Page 10
6733 Assembly Drawing – Offset Left	Page 11
Warranty and Important Notice	Back Cover

INTRODUCTION

This manual is intended to assist you in the assembly, operation and maintenance of the Dutch Packer Wheel System. Read and follow all instructions and safety precautions carefully.

There are three main categories of this product. They are identified by the width of the packing wheel that performs the soil compaction. Within these main categories are many different wheel spacings and options. These different models are used in conjunction with a toolbar.

If any further information or assistance is required, contact your local Dutch Products Dealer.

GENERAL SAFETY

Occupational safety is of prime concern to Dutch Industries Ltd. This manual was written with the safety of the operator and others who come into contact with the equipment as our prime concern. This manual entails the safety, assembly, operation and maintenance encountered by the operator and other personnel. We wrote this manual to help you understand safe operating procedures. We want you as a partner in the safe operation of our products.

It is your responsibility as an owner or operator or supervisor, to know what specific requirements, precautions and work hazards exist and to make these known to all other personnel working with the equipment or in the area, so that they may take any necessary safety precautions that may be required.

Failure to read this manual and its safety instructions is a misuse of the product.

SAFETY INSTRUCTIONS

1. Do not operate this unit unless you have read the operators manual.
2. Never allow this product to be operated by anyone who is unfamiliar to the operations of this unit.
3. Never permit anyone near unit when in operation.
4. Use caution when working with heavy or sharp objects.
5. Ensure that proper clothing, tools and equipment are used when handling this unit.
6. Ensure that all hardware is fastened properly.
7. After installation, ensure that all tools and parts are removed before operation of this unit.
8. Failure to follow safety rules may result in injury or death.
9. Ensure that you stay clear of pinch points and block up any equipment that could possibly fall.

GETTING STARTED

The Tools and Material required are as follows:

1/2" Socket Set / 1/2" Impact Socket Set
9/16", 3/4", 15/16", Open Ended Wrenches
6" Adjustable Wrench (Crescent Wrench)
1/2" Impact Wrench (Optional)
Hammer

Suggested Torque for sizes of bolts and nuts are as follows:

3/8"	30 ft. lb.
1/2"	75 ft. lb.
5/8"	100 ft. lb.

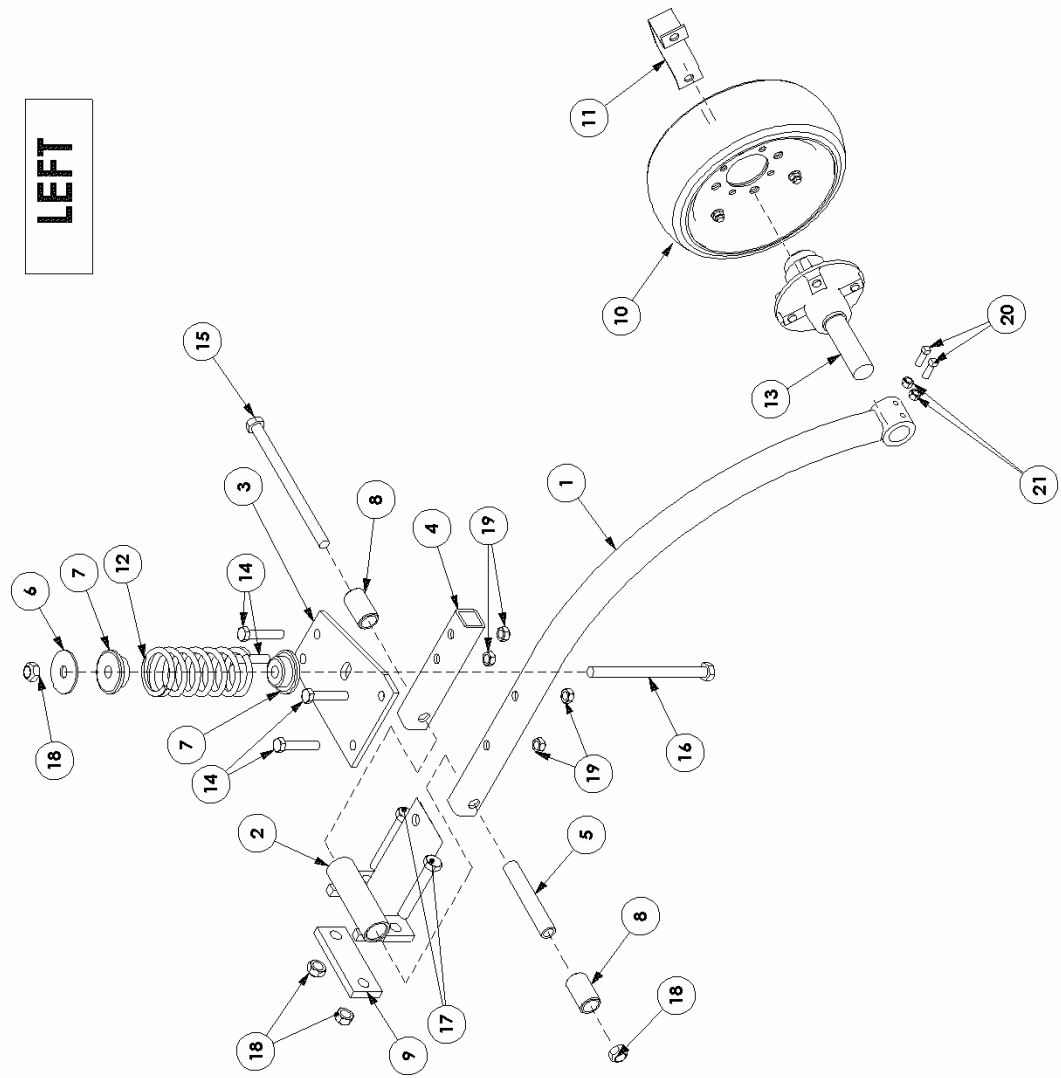
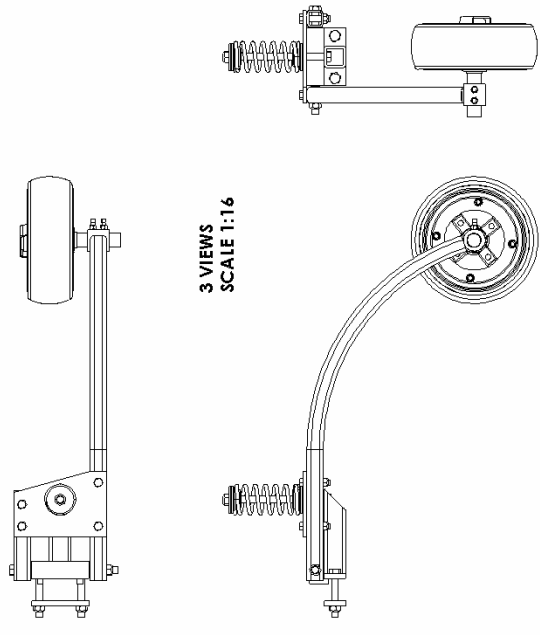
INITIAL SET UP

When you receive your quality Dutch Product, the customer should unpack all components to ensure that all parts have been shipped. Refer to respective drawing for listing. Once the quantities are confirmed, proceed to your site. Be sure to bring the tools listed above.

INSTALLATION INSTRUCTIONS

1. Press Plastic Bushing (Item 8) into Shank Mount Packer Mount (Item 2). A press or hammer may be used to achieve this. The factory reams these installed bushings to have 0.060" Clearance.
2. Insert Pivot (Item 5) inside the Plastic Bushings (Item 8) which have just been pressed and reamed into Item 2.
3. Bolt the Packer Arm (Item 1), the Packer Brace (Item 4), and the Shank Mount Packer Mount (Item 2) together. Make sure that Item 5 is inside Item 2. Use a 5/8" x 9 1/2" Hex Bolt (Item 15), and a 5/8" Cleave Nut (Item 18). DO NOT tighten this bolt completely.
4. Bolt Packer Plate (Item 3) to the Packer Arm (Item 1) and Packer Brace (Item 4). Use 1/2" x 2 1/2" Hex Bolts (Item 14), and 1/2" Cleave Nuts (Item 19). Tighten as per correct torque values.
5. Now tighten the 5/8" x 9 1/2" Hex Bolt (Item 15) that was installed in Step #3.
6. Insert 5/8" x 8" Hex Bolt (Item 16) into Packer Plate (Item 3). Slide Spring Guide (Item 7), Spring (Item 12), and Spring Retainer Washer (Item 6) onto Bolt, in the order that is shown on the assembly drawing.
7. Tighten Spring Assembly. Tighten so that the 5/8" Cleave Nut is flush to the end of the 5/8" x 8" Hex Bolt. This will set the Packer Wheel at approximately 100lbs pressure. After testing the product in the field, this packing pressure can be increased if deemed necessary.
8. Bolt Spindle (Item 13), 4" Packer Wheel Assembly (Item 10), and Packer Cap Retainer (Item 11) together.
9. Insert Packer Wheel Assembly (Item 10, 11, 13) into Packer Arm (Item 1).
10. Screw 3/8" Hex Nut (Item 21) onto 3/8" x 1" Set Screw (Item 20).
11. Screw 3/8" x 1" Set Screw and 3/8" Hex Nut (Item 20, 21) into Packer Arm (Item 1). DO NOT tighten the set screw yet.
12. Bolt the entire assembly onto the shank using the Packer Mount Plate (Item 9), the 5/8" x 4" Hex Bolts (Item 17), and the 5/8" Cleave Nuts (Item 18). Tighten on the shank as far up as possible.
13. Adjust Packing Wheel to line up with where the coulter will be cutting open the soil. Once in the correct position, tighten the 2 - 3/8" x 1" Set Screws. Once they are tight, tighten the 3/8" Hex Nuts also. This will avoid the Set screws from becoming loose. Packer position is hard to judge as this point, and can be finely tuned by running a test pass with the tractor in the ground.
14. Double Check to make sure that all Bolts are tightened to their appropriate torque values.

LEFT



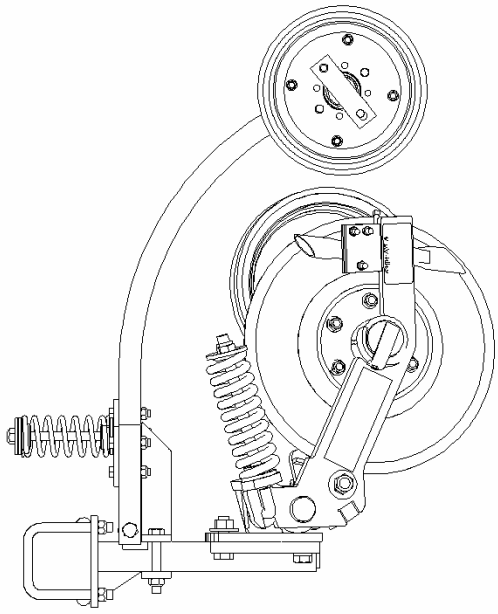
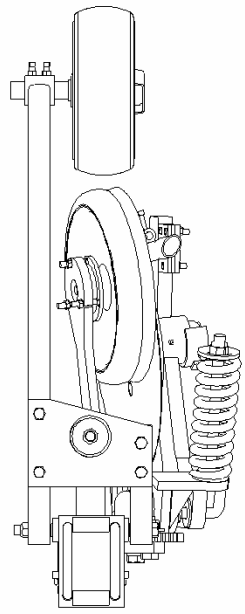
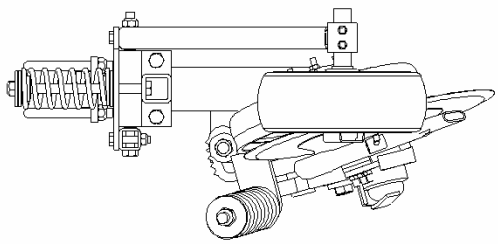
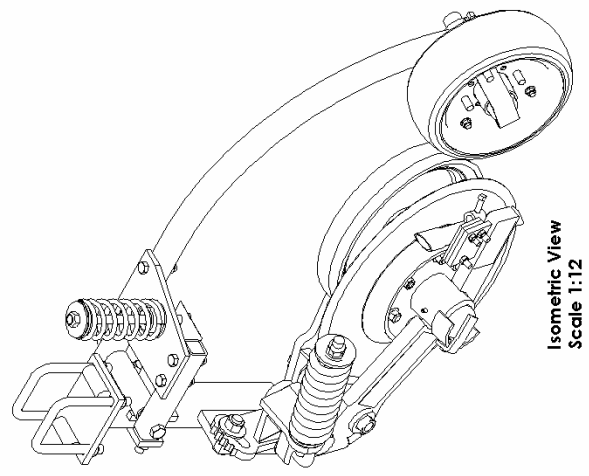
21	2	HN38PLC5	HEX NUT, 3/8
20	2	SETSCRM, 3/8 x 1	SET SCREW, 3/8 x 1
19	4	CN12PL	CLEAVE NUT, 1/2
18	4	CN58PL	CLEAVE NUT, 5/8
17	2	HH584PLC5	HEX BOLT, 5/8 x 4
16	1	HH588PLC5	HEX BOLT, 5/8 x 8
15	1	HH58912PLC5	HEX BOLT, 5/8 x 9 1/2
14	4	HH12212PLC5	HEX BOLT, 1/2 x 2 1/2
13	1	110821	SPINDLE
12	1	110820	SPRING
11	1	6813	Packer Cap Retainer
10	1	7940	4" PACKER WHEEL ASSEMBLY
9	1	6696.5	Packer Mount Plate
8	2	6569	PLASTIC BUSHING 1.27"X0.938"
7	2	6702	SPRING GUIDE
6	1	6701	Spring Retainer Washer
5	1	6697	PIVOT
4	1	6695.2	PACKER BRACE
3	1	6695	PACKER PLATE
2	1	6696	SHANK MOUNT PACKER MOUNT
1	1	6699	PACKER ARM
ITEM QTY.		PART NO.	DESCRIPTION

PARTS LIST
 THIS DRAWING IS THE PROPERTY OF:
DUTCH INDUSTRIES LIMITED
 ALL RIGHTS RESERVED

DRAWN BY: BC DESCRIPTION: COULTER PACKER - LEFT
 DATE CREATED: JAN 14/02 MATERIAL: As Per BOM
 TOLERANCES: ±1/16" PROCESS: Assembly
 SCALE: 1:10 **PART #: 6700**

NOTES:

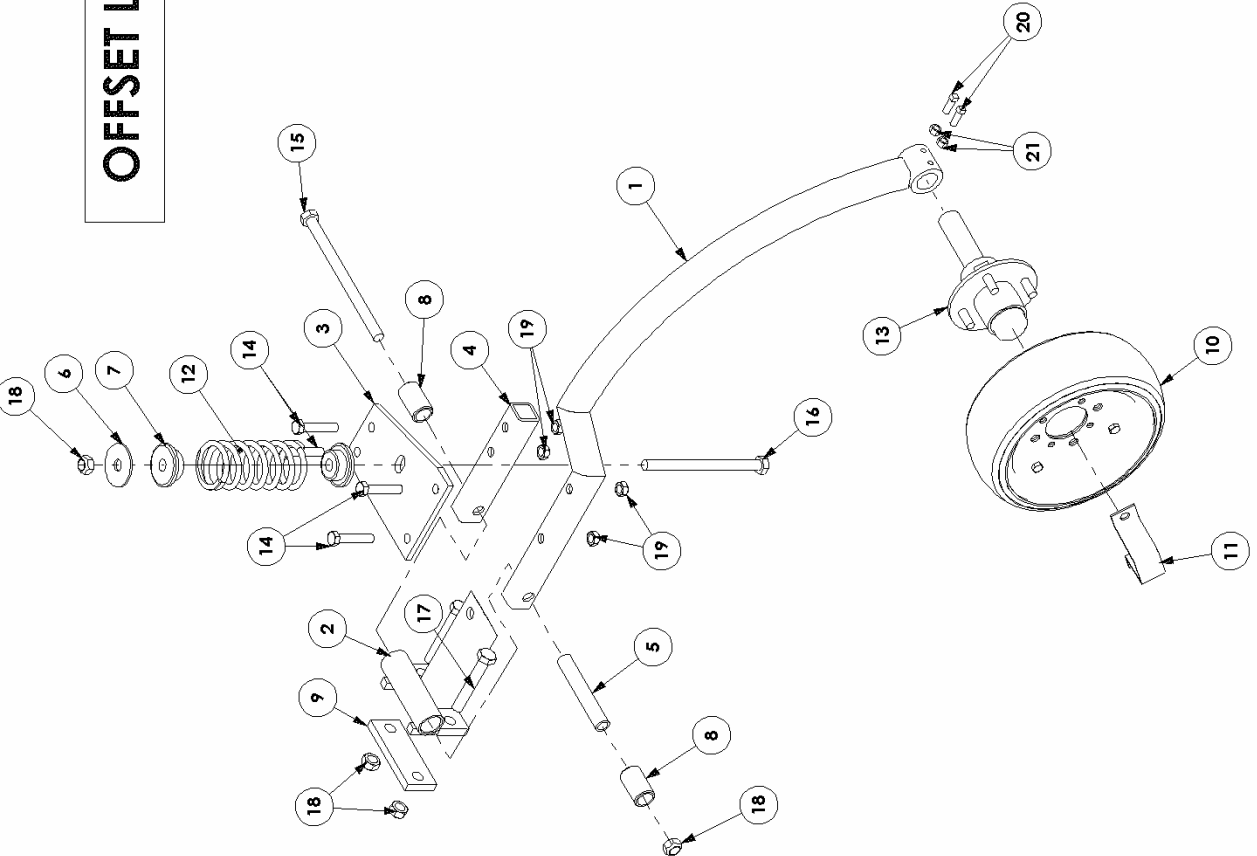
RIGHT



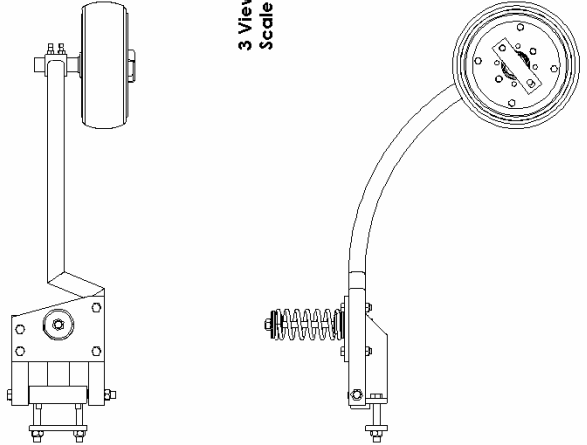
PARTS LIST	
THIS DRAWING IS THE PROPERTY OF: DUTCH INDUSTRIES LIMITED ALL RIGHTS RESERVED	
DRAWN BY: BC	DESCRIPTION: Assembly with Couler
DATE CREATED: JAN 30/02	MATERIAL: N/A
TOLERANCES: ±1/16"	PROCESS: N/A
SCALE: 1:12	PART #: Packer Wheel Assy Right

NOTES:

OFFSET LEFT



**3 Views
Scale 1:16**



21	2	HN88PLC5	HEX NUT, 3/8
20	2	SETSCRM, 3/8 x 1	SET SCREW, 3/8 x 1
19	4	CN12PL	CLEAVE NUT, 1/2
18	4	CN58PL	CLEAVE NUT, 5/8
17	2	HH584PLC5	HEX BOLT, 5/8 x 4
16	1	HH688PLC5	HEX BOLT, 5/8 x 8
15	1	HH58912PLC5	HEX BOLT, 5/8 x 9 1/2
14	4	HH12212PLC5	HEX BOLT, 1/2 x 2 1/2
13	1	110821	SPINDLE
12	1	110820	SPRING
11	1	6813	Packer Cap Retainer
10	1	7940	4" PACKER WHEEL ASSEMBLY
9	1	6696.5	Packer Mount Plate
8	2	6569	PLASTIC BUSHING 1.27"x0.938"
7	2	6702	SPRING GUIDE
6	1	6701	Spring Retainer Washer
5	1	6697	PIVOT
4	1	6695.2	PACKER BRACE
3	1	6695	PACKER PLATE
2	1	6696	SHANK MOUNT PACKER MOUNT
1	1	6727	Offset Arm - Left
ITEM	QTY.	PART NO.	DESCRIPTION

PARTS LIST

THIS DRAWING IS THE PROPERTY OF:

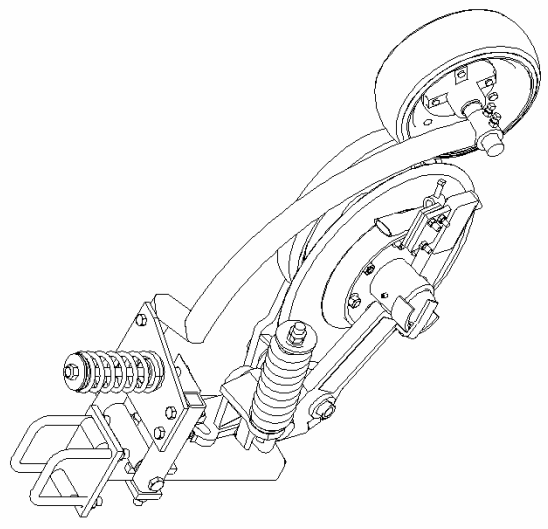
DUTCH INDUSTRIES LIMITED

ALL RIGHTS RESERVED

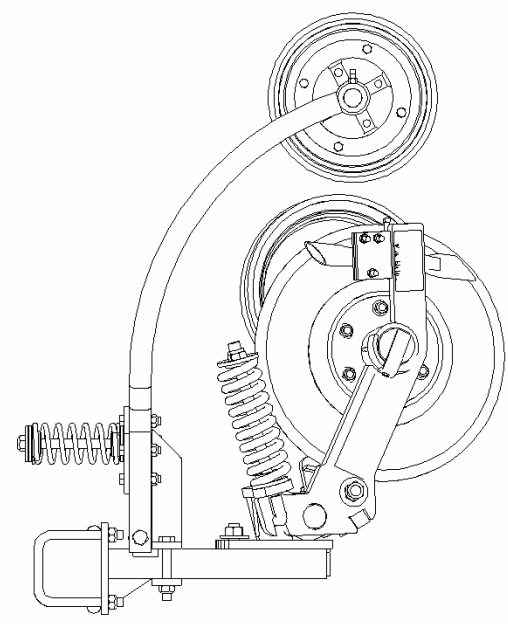
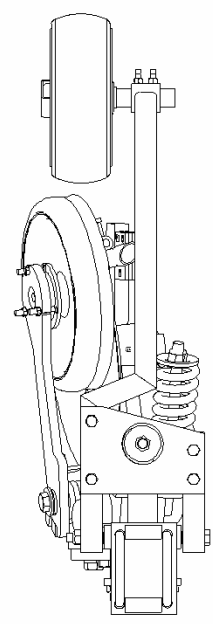
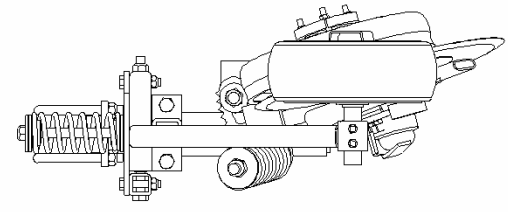
DRAWN BY: BC	DESCRIPTION: COULTER PACKER OFFSET - Left
DATE CREATED: NOV 13/01	MATERIAL: As Per BOM
TOLERANCES: ±1/16"	PROCESS: Assembly
SCALE: 1:10	PART #: 6734

NOTES:

OFFSET RIGHT



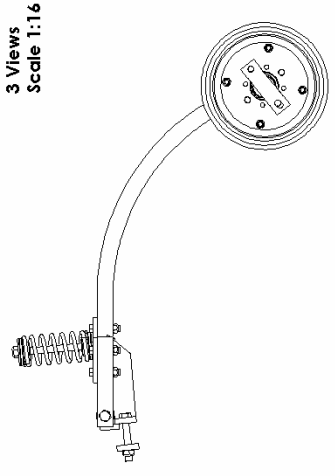
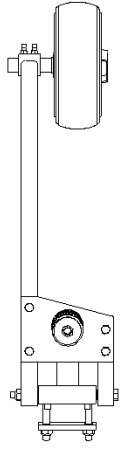
Isometric View
Scale 1:12



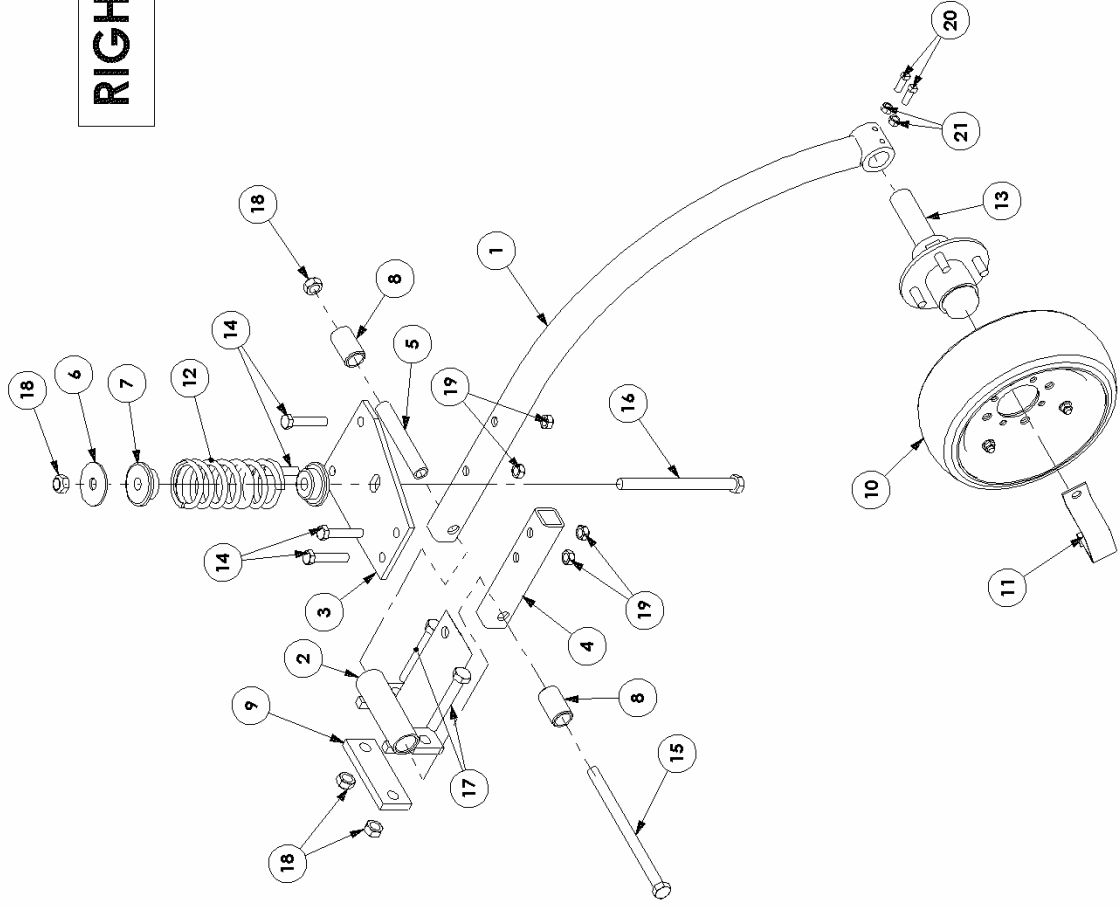
NOTES:

PARTS LIST	
THIS DRAWING IS THE PROPERTY OF: DUTCH INDUSTRIES LIMITED ALL RIGHTS RESERVED	
DRAWN BY: BC	DESCRIPTION: Assembly with Couller
DATE CREATED: JAN 30/02	MATERIAL: N/A
TOLERANCES: ±1/16"	PROCESS: N/A
SCALE: 1:12	PART #: Packer Wheel Assy Offset Right

RIGHT



3 Views
Scale 1:16



21	2	HN38PLC5	HEX NUT, 3/8
20	2	SET SCRM, 3/8 x 1	
19	4	CN12PL	CLEAVE NUT, 1/2
18	4	CN58PL	CLEAVE NUT, 5/8
17	2	HH584PLC5	HEX BOLT, 5/8 x 4
16	1	HH588PLC5	HEX BOLT, 5/8 x 8
15	1	HH58912PLC5	HEX BOLT, 5/8 x 9 1/2
14	4	HH12212PLC5	HEX BOLT, 1/2 x 2 1/2
13	1	110821	SPINDLE
12	1	110820	SPRING
11	1	6813	Packer Cap Retainer
10	1	7940	4" PACKER WHEEL ASSEMBLY
9	1	6696.5	Packer Mount Plate
8	2	6569	PLASTIC BUSHING 1.27"x0.938"
7	2	6702	SPRING GUIDE
6	1	6701	Spring Retainer Washer
5	1	6697	PIVOT
4	1	6695.2	PACKER BRACE
3	1	6695	PACKER PLATE
2	1	6696	SHANK MOUNT PACKER MOUNT
1	1	6699	PACKER ARM
ITEM	QTY.	PART NO.	DESCRIPTION

PARTS LIST

THIS DRAWING IS THE PROPERTY OF:

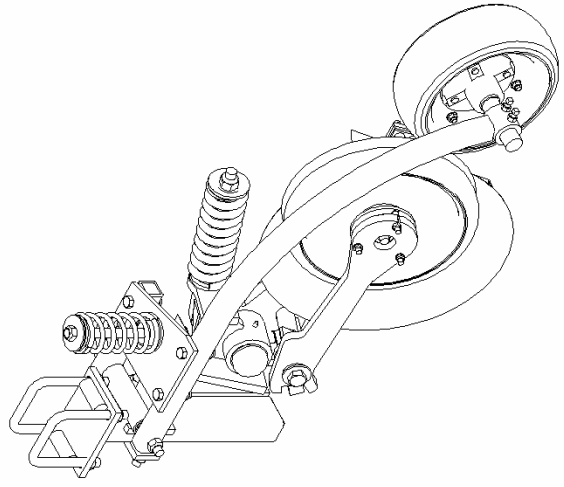
DUTCH INDUSTRIES LIMITED

ALL RIGHTS RESERVED

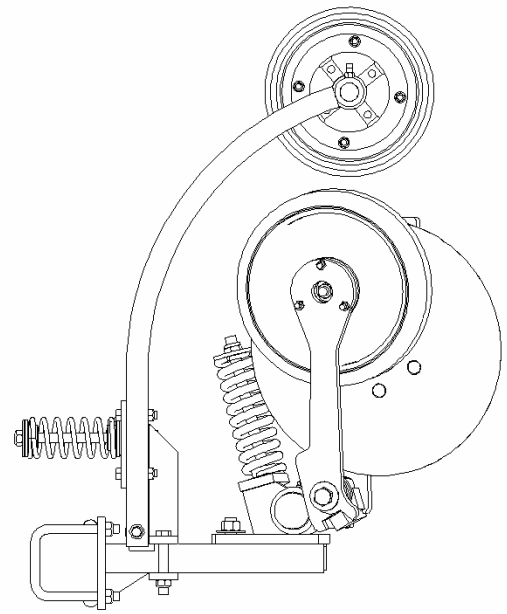
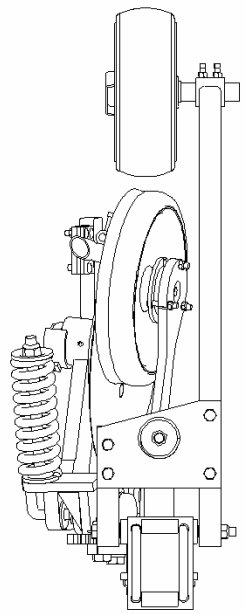
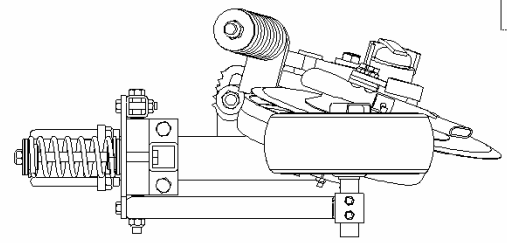
DRAWN BY: BC	DESCRIPTION: COULTTER PACKER - RIGHT
DATE CREATED: NOV 29/01	MATERIAL: As Per BOM
TOLERANCES: ±1/16"	PROCESS: Assembly
SCALE: 1:10	PART #: 6735

NOTES:

LEFT



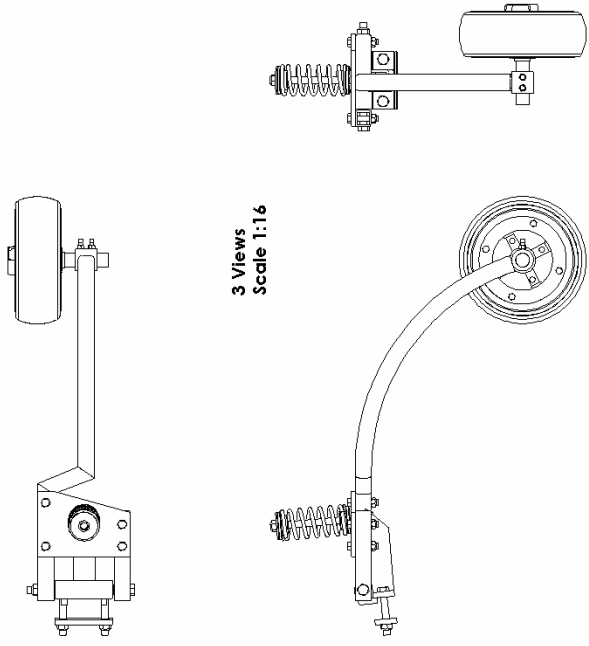
Isometric View
Scale 1:12



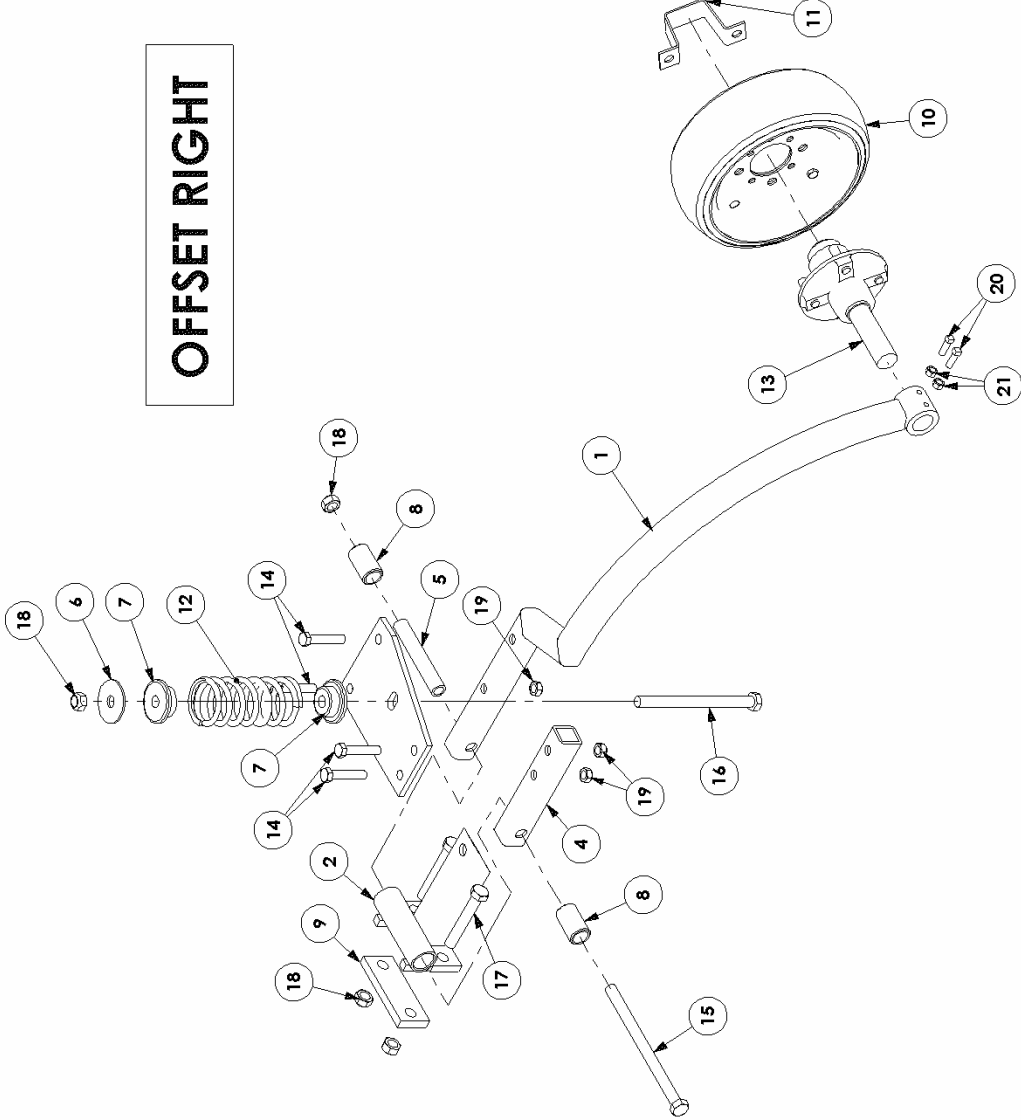
NOTES:

PARTS LIST	
THIS DRAWING IS THE PROPERTY OF: DUTCH INDUSTRIES LIMITED ALL RIGHTS RESERVED	
DRAWN BY: BC	DESCRIPTION: Assembly with Couller
DATE CREATED: JAN 30/02	MATERIAL: N/A
TOLERANCES: ±1/16"	PROCESS: N/A
SCALE: 1:12	PART #: Packer Wheel Assy Left

OFFSET RIGHT



3 Views
Scale 1:16



21	2	HN38PLC5	HEX NUT, 3/8
20	2	SETSCREW, 3/8x1	
19	4	CN12PL	CLEAVE NUT, 1/2
18	4	CN58PL	CLEAVE NUT, 5/8
17	2	HH584PLC5	HEX BOLT, 5/8 x 4
16	1	HH688PLC5	HEX BOLT, 5/8 x 8
15	1	HH58912PLC5	HEX BOLT, 5/8 x 9 1/2
14	4	HH12212PLC5	HEX BOLT, 1/2 x 2 1/2
13	1	110821	SPINDLE
12	1	110820	SPRING
11	1	6813	Packer Cap Retainer
10	1	7940	4" PACKER WHEEL ASSEMBLY
9	1	6696.5	Packer Mount Plate
8	2	6569	PLASTIC BUSHING 1.27"x0.938"
7	2	6702	SPRING GUIDE
6	1	6701	Spring Retainer Washer
5	1	6697	PIVOT
4	1	6695.2	PACKER BRACE
3	1	6695	PACKER PLATE
2	1	6696	SHANK MOUNT PACKER MOUNT Offset Arm - Left
1	1	6726	Offset Arm - Left
ITEM QTY.	PART NO.	DESCRIPTION	

PARTS LIST

THIS DRAWING IS THE PROPERTY OF:
DUTCH INDUSTRIES LIMITED
ALL RIGHTS RESERVED

DESCRIPTION: COULTER PACKER OFFSET - Right

DRAWN BY: BC

DATE CREATED: NOV 13/01

TOLERANCES: ±1/16"

SCALE: 1:10

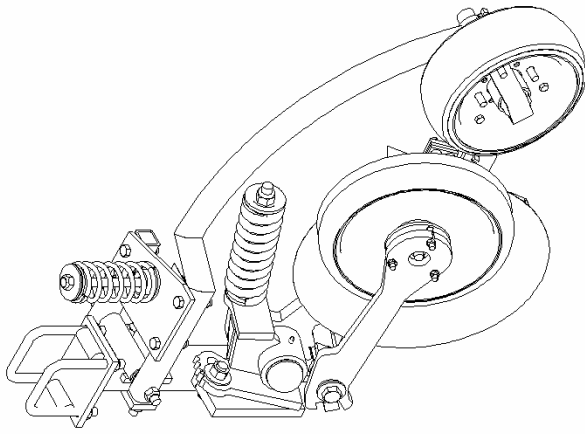
MATERIAL: As Per BOM

PROCESS: Assembly

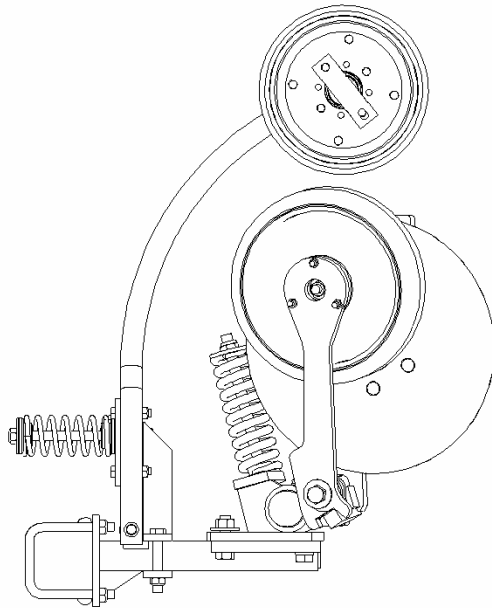
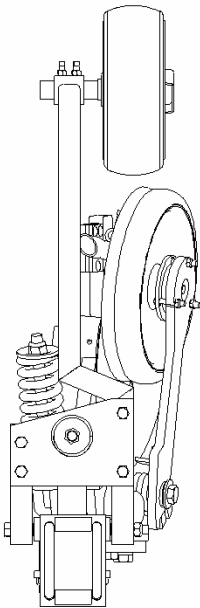
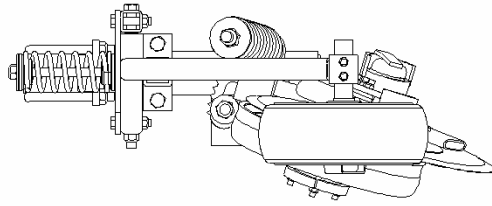
PART #: 6733

NOTES:

OFFSET LEFT



Isometric View
Scale 1:12



NOTES:

PARTS LIST	
THIS DRAWING IS THE PROPERTY OF: DUTCH INDUSTRIES LIMITED ALL RIGHTS RESERVED	
DRAWN BY: BC	DESCRIPTION: Assembly with Couller
DATE CREATED: JAN 30/02	MATERIAL: N/A
TOLERANCES: ±1/16"	PROCESS: N/A
SCALE: 1:12	PART #: Packer Wheel Assy Offset Left

WARRANTY

DUTCH INDUSTRIES LIMITED WILL WARRANT EACH NEW DUTCH PACKER WHEEL SYSTEM TO BE FREE FROM FACTORY DEFECTS IN MATERIAL AND WORKMANSHIP FOR ONE YEAR FROM THE DELIVERY DATE BY THE DEALER TO THE ORIGINAL PURCHASER.

THIS WARRANTY PREVAILS ONLY IF THE UNIT IS SET UP AND OPERATED IN ACCORDANCE WITH FACTORY INSTRUCTIONS AND NORMAL USE AND SERVICE.

DUTCH INDUSTRIES LTD.'S OBLIGATION UNDER THIS WARRANTY IS LIMITED TO SUPPLYING REPLACEMENT PARTS IN EXCHANGE FOR ANY PARTS WHICH ARE DEFECTIVE DUE TO FACTORY WORKMANSHIP OR MATERIAL. ALL DEFECTIVE PARTS MUST BE SENT TO DUTCH INDUSTRIES LTD. FOR WARRANTY EXAMINATION.

THE WARRANTY REGARDING PARTS PURCHASED BY DUTCH INDUSTRIES LTD, FOR USE ON DUTCH IND. PRODUCTS, IS DEPENDANT ON THE VENDORS WARRANTY.

THIS WARRANTY IS VOID ON ANY UNIT WHICH HAS BEEN TAMPERED WITH OR WHICH HAS BEEN SUBJECT TO MISUSE, NEGLIGENCE, OR ACCIDENT, OR WHICH HAS HAD THE SERIAL NUMBER TAMPERED WITH OR REMOVED.

IMPORTANT NOTICE

WHILE EVERY PRECAUTION HAS BEEN TAKEN IN THE PREPARATION OF THIS MANUAL, DUTCH INDUSTRIES ASSUMES NO RESPONSIBILITY FOR INACCURACIES OR OMISSIONS. NO RESPONSIBILITY IS ASSUMED FOR DAMAGES RESULTING FOR THE USE OF THE INFORMATION CONTAINED WITHIN. DUTCH INDUSTRIES RESERVES THE RIGHT TO CHANGE AND IMPROVE ITS PRODUCTS AS IT SEES FIT. THIS MANUAL DESCRIBES THE CONDITION OF THIS PRODUCT AT THE TIME OF ITS PRINTING, AND MAY NOT REFLECT THE PRODUCT AT ALL TIMES IN THE FUTURE.

ALL RIGHTS RESERVED. NO PART OF THIS PUBLICATION MAY BE REPRODUCED, STORED IN A RETRIEVAL SYSTEM, OR TRANSMITTED, IN ANY FORM OR BY ANY MEANS, ELECTRONIC, MECHANICAL, PHOTOCOPYING, RECORDING, OR OTHERWISE WITHOUT THE PRIOR WRITTEN PERMISSION OF THE PUBLISHER.

COPYRIGHT, 2002, DUTCH INDUSTRIES LTD.