



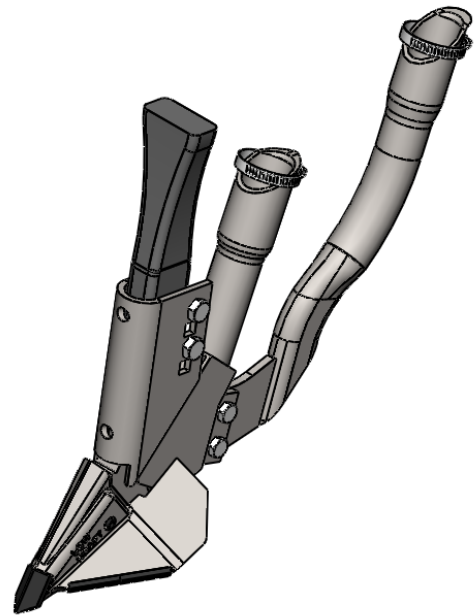
Low Draft Series

Morris 47° Edge-On Shank Installation Sheet

LD-3

INSTALLATION

- Refer to the diagram below to see the install locations of the tip, fertilizer tube and other hardware.
- Ensure that the fertilizer tube is installed on the correct side of the mounting tab, located on the body, so the tube is centred to the body.
- Install the tip as per its orientation on the diagram and with the writing upright.
- Use an impact if possible to tighten the shank bolts during the initial install and torque them to 50 ft-lb. After 4 hours of use it is recommended that you ensure all bolts are still tight and re-torque to 50 ft-lb. This should prepare you for the season.

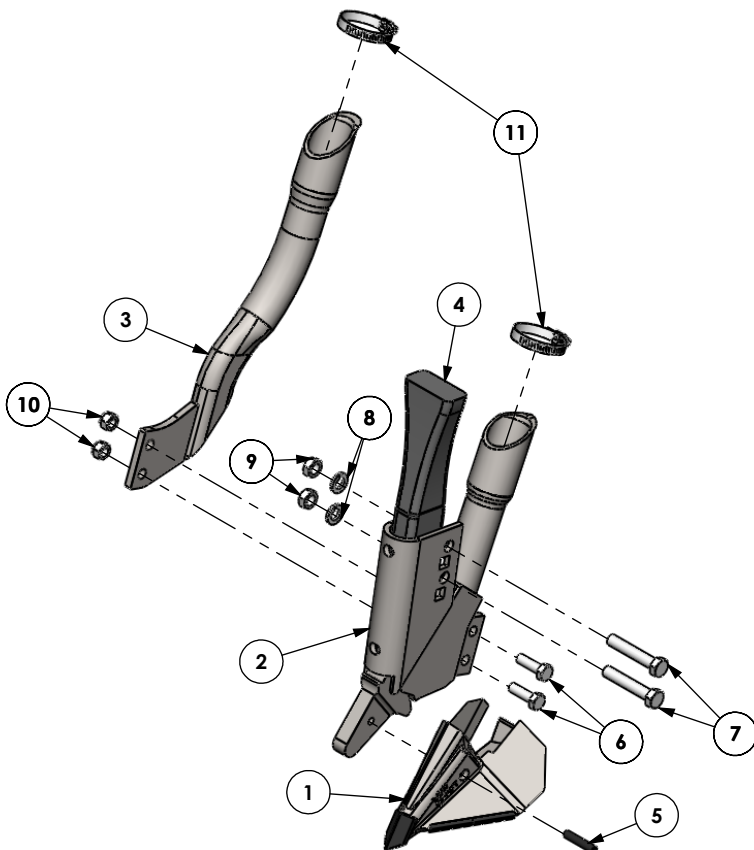


** HELPFUL HINT **

- It is recommended to pre-assemble all components before installing the openers onto the shank. This will make assembly quicker and easier.
- When running sideband openers, you will require an equal number of left and right openers, unless your machine is equipped with an odd number of shanks. Left openers should be installed on the right side of the drill and right openers should be installed on the left side of the drill. This will ensure your drill runs true and prevent plugging while the drill is turning.

ADDITIONAL INFORMATION

- For more information contact Dutch Industries directly at (800)-663-8824.



DISCLAIMER

This information is made available to the public by Dutch Industries solely as a guide for the installation of openers. Dutch Industries Ltd. assumes no legal liability or responsibility for the accuracy, completeness, or usefulness of any information contained in this document and as a result holds no legal liability or responsibility for damages or losses resulting from the use of this information. Dutch Industries reserves the right to change and improve its products as seen fit. This information describes the condition of this product at the time of its printing and may not reflect the product at all times in the future.

11	2	HC114	#20 Hose Clamp
10	2	111027	LOCK NUT, 5/16
9	2	CN38PL	CLEAVE NUT, 3/8
8	2	LW38PL	LOCK WASHER, 3/8 PLATED
7	2	HH382PLC8	HEX BOLT, 3/8 x 2
6	2	HH5161PLC5	HEX BOLT, 5/16 x 1
5	1	RP14114	ROLL PIN
4	1		Edge-On Shank
3	1		Fertilizer Tube
2	1		Low Draft Body
1	1		Low Draft Tip
ITEM	QTY	PART NO.	DESCRIPTION

THIS DRAWING IS THE PROPERTY OF:

DUTCH INDUSTRIES LIMITED
ALL RIGHTS RESERVED

DRAWN BY: JMD

DATE CREATED: OCT 19/09

SCALE: 1:7