



Precision Series

50° C-Shank Installation Sheet

PR-1

INSTALLATION

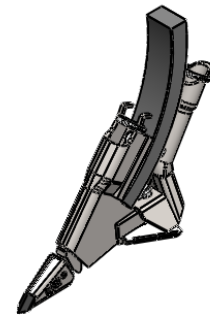
- Refer to the diagram below to see the install locations of the tip, fertilizer tube, sealer plate and other hardware.
- Install the tip onto the opener as per its orientation on the diagram and with the writing upright.
- If the optional anhydrous ammonia kit is being installed, insert the plow bolts through the bolt holes of the body before inserting the anhydrous tube into the body. The bottom tip of the anhydrous tube must sit 1/4" below the bottom of the opener.
- Fasten the sealer plate to the opener by installing only the bolt closest to the tip.
- Fasten the opener to the shank and torque the shank bolts to 120 ft-lb. After 4 hours of use it is recommended that you ensure all bolts are still tight and re-torque to 120 ft-lb. This should prepare you for the season.
- Dutch lock nuts have been provided for the shank bolts which have a stainless steel insert as opposed to the synthetic insert found in common lock nuts. This will help keep your hardware in place through any condition longer and better than a standard lock nut.
- Install the seed tube to the sealer plate and opener body.

** HELPFUL HINT **

- When running sideband openers, you will require an equal number of left and right openers, unless your machine is equipped with an odd number of shanks. Left openers should be installed on the right side of the drill and right openers should be installed on the left side of the drill. This will ensure your drill runs true and prevent plugging while the drill is turning.

ADDITIONAL INFORMATION

- For more information contact Dutch Industries directly at (800)-663-8824.



USING SHIMS

WHY IS THE OPERATING ANGLE IMPORTANT?

If your equipment is not running at the designed operating angle of 50°, complications may arise such as plugging, excessive breakage, premature wear, or poor seed placement

HOW DO I KNOW IF MY SHANK IS 50°?

Ensure that the drill is level and place a piece of flat bar between the two holes at the bottom of the shank. Place a simple angle finder across the piece of flat bar. This angle is the operating angle of your shank.

WHAT DO I DO IF MY SHANK IS NOT 50°?

Shims are available from Dutch Industries and can be used to alter the operating angle of your equipment. These shims are available in 3°, 4° and 7°. If you are running too steep place the shim in the bottom bolt hole to raise the tip of the opener. If you are running too flat place the shim in the top bolt hole to lower the tip of the opener.



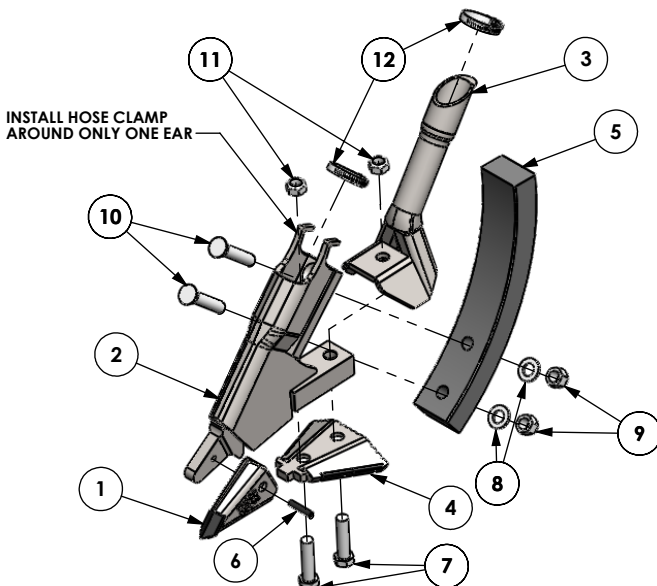
6827 (3°)



6826 (4°)



FAKN369 (7°)



INSTALL HOSE CLAMP AROUND ONLY ONE EAR

DISCLAIMER

This information is made available to the public by Dutch Industries solely as a guide for the installation of openers. Dutch Industries Ltd. assumes no legal liability or responsibility for the accuracy, completeness, or usefulness of any information contained in this document and as a result holds no legal liability or responsibility for damages or losses resulting from the use of this information. Dutch Industries reserves the right to change and improve its products as seen fit. This information describes the condition of this product at the time of its printing and may not reflect the product at all times in the future.

ITEM	QTY	PART NO.	DESCRIPTION
12	2	HC114	#20 Hose Clamp
11	2	CN12PL	CLEAVE NUT, 1/2
10	2	111029	PLOW BOLT, 1/2 x 2 1/2
9	2	111014	LOCK NUT, 1/2
8	2	111015	SAE FLAT WASHER, 1/2
7	2	HH122PLC5	HEX BOLT, 1/2 x 2
6	1	RP14114	ROLL PIN
5	1		C-Shank
4	1		Sealer Plate
3	1		Seed Tube
2	1		Precision Body
1	1		Precision Tip

THIS DRAWING IS THE PROPERTY OF:
DUTCH INDUSTRIES LIMITED
 ALL RIGHTS RESERVED

DRAWN BY: JMD

DATE CREATED: OCT 19/09

SCALE: 1:8